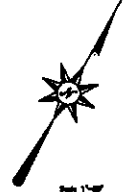
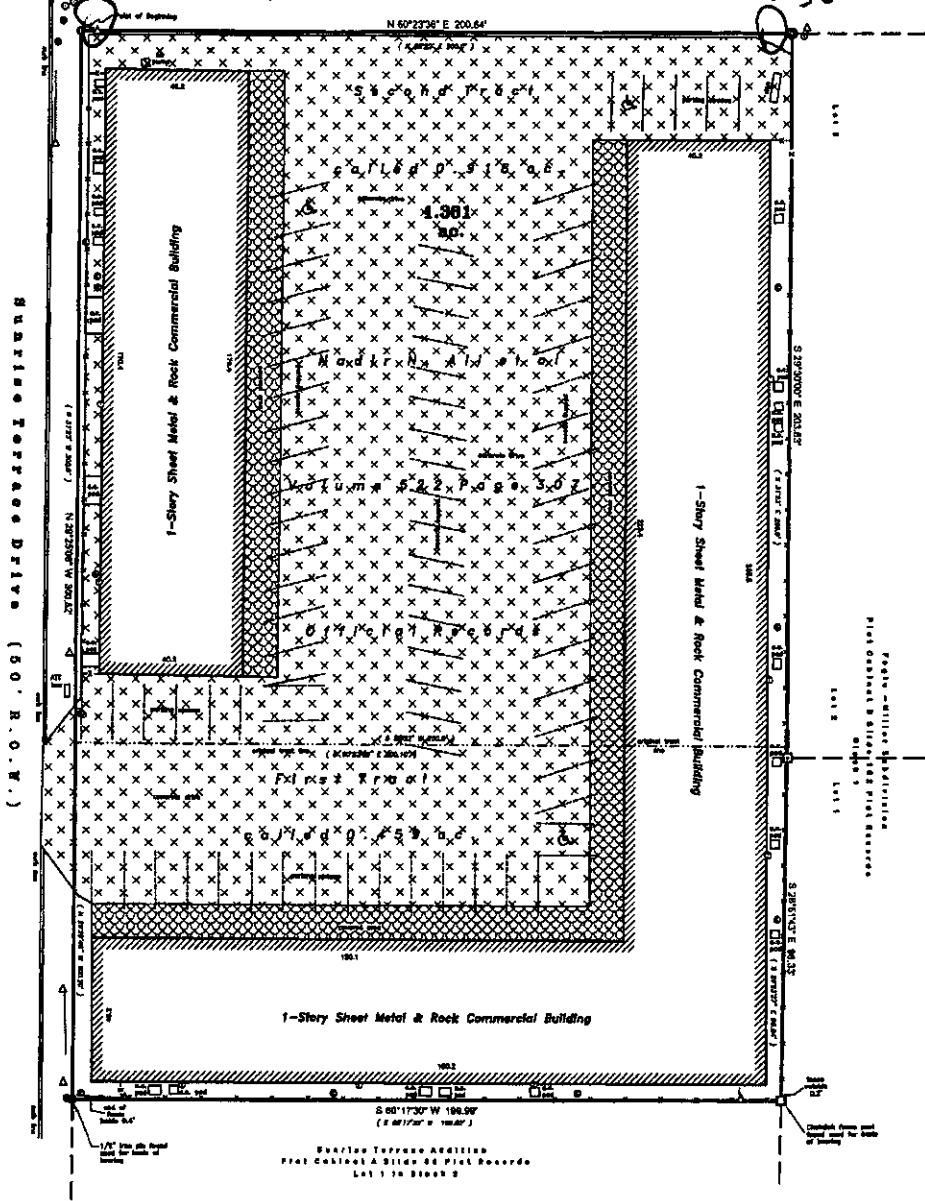


City of Lockhart Caldwell County, Texas
Francis Berry Survey A-2

(80' R.O.W.) #1100 State Park Road (Farm to Market #80)



- LEGEND**
- 1/2" DIA. PILE
 - 1/4" DIA. PILE
 - 3/8" DIA. PILE
 - 1/2" DIA. PILE
 - 3/4" DIA. PILE
 - 1" DIA. PILE
 - 1 1/2" DIA. PILE
 - 2" DIA. PILE
 - 3" DIA. PILE
 - 4" DIA. PILE
 - 6" DIA. PILE
 - 8" DIA. PILE
 - 10" DIA. PILE
 - 12" DIA. PILE
 - 14" DIA. PILE
 - 16" DIA. PILE
 - 18" DIA. PILE
 - 20" DIA. PILE
 - 24" DIA. PILE
 - 30" DIA. PILE
 - 36" DIA. PILE
 - 42" DIA. PILE
 - 48" DIA. PILE
 - 54" DIA. PILE
 - 60" DIA. PILE
 - 66" DIA. PILE
 - 72" DIA. PILE
 - 78" DIA. PILE
 - 84" DIA. PILE
 - 90" DIA. PILE
 - 96" DIA. PILE
 - 102" DIA. PILE
 - 108" DIA. PILE
 - 114" DIA. PILE
 - 120" DIA. PILE
 - 126" DIA. PILE
 - 132" DIA. PILE
 - 138" DIA. PILE
 - 144" DIA. PILE
 - 150" DIA. PILE
 - 156" DIA. PILE
 - 162" DIA. PILE
 - 168" DIA. PILE
 - 174" DIA. PILE
 - 180" DIA. PILE
 - 186" DIA. PILE
 - 192" DIA. PILE
 - 198" DIA. PILE
 - 204" DIA. PILE
 - 210" DIA. PILE
 - 216" DIA. PILE
 - 222" DIA. PILE
 - 228" DIA. PILE
 - 234" DIA. PILE
 - 240" DIA. PILE
 - 246" DIA. PILE
 - 252" DIA. PILE
 - 258" DIA. PILE
 - 264" DIA. PILE
 - 270" DIA. PILE
 - 276" DIA. PILE
 - 282" DIA. PILE
 - 288" DIA. PILE
 - 294" DIA. PILE
 - 300" DIA. PILE
 - 306" DIA. PILE
 - 312" DIA. PILE
 - 318" DIA. PILE
 - 324" DIA. PILE
 - 330" DIA. PILE
 - 336" DIA. PILE
 - 342" DIA. PILE
 - 348" DIA. PILE
 - 354" DIA. PILE
 - 360" DIA. PILE
 - 366" DIA. PILE
 - 372" DIA. PILE
 - 378" DIA. PILE
 - 384" DIA. PILE
 - 390" DIA. PILE
 - 396" DIA. PILE
 - 402" DIA. PILE
 - 408" DIA. PILE
 - 414" DIA. PILE
 - 420" DIA. PILE
 - 426" DIA. PILE
 - 432" DIA. PILE
 - 438" DIA. PILE
 - 444" DIA. PILE
 - 450" DIA. PILE
 - 456" DIA. PILE
 - 462" DIA. PILE
 - 468" DIA. PILE
 - 474" DIA. PILE
 - 480" DIA. PILE
 - 486" DIA. PILE
 - 492" DIA. PILE
 - 498" DIA. PILE
 - 504" DIA. PILE
 - 510" DIA. PILE
 - 516" DIA. PILE
 - 522" DIA. PILE
 - 528" DIA. PILE
 - 534" DIA. PILE
 - 540" DIA. PILE
 - 546" DIA. PILE
 - 552" DIA. PILE
 - 558" DIA. PILE
 - 564" DIA. PILE
 - 570" DIA. PILE
 - 576" DIA. PILE
 - 582" DIA. PILE
 - 588" DIA. PILE
 - 594" DIA. PILE
 - 600" DIA. PILE
 - 606" DIA. PILE
 - 612" DIA. PILE
 - 618" DIA. PILE
 - 624" DIA. PILE
 - 630" DIA. PILE
 - 636" DIA. PILE
 - 642" DIA. PILE
 - 648" DIA. PILE
 - 654" DIA. PILE
 - 660" DIA. PILE
 - 666" DIA. PILE
 - 672" DIA. PILE
 - 678" DIA. PILE
 - 684" DIA. PILE
 - 690" DIA. PILE
 - 696" DIA. PILE
 - 702" DIA. PILE
 - 708" DIA. PILE
 - 714" DIA. PILE
 - 720" DIA. PILE
 - 726" DIA. PILE
 - 732" DIA. PILE
 - 738" DIA. PILE
 - 744" DIA. PILE
 - 750" DIA. PILE
 - 756" DIA. PILE
 - 762" DIA. PILE
 - 768" DIA. PILE
 - 774" DIA. PILE
 - 780" DIA. PILE
 - 786" DIA. PILE
 - 792" DIA. PILE
 - 798" DIA. PILE
 - 804" DIA. PILE
 - 810" DIA. PILE
 - 816" DIA. PILE
 - 822" DIA. PILE
 - 828" DIA. PILE
 - 834" DIA. PILE
 - 840" DIA. PILE
 - 846" DIA. PILE
 - 852" DIA. PILE
 - 858" DIA. PILE
 - 864" DIA. PILE
 - 870" DIA. PILE
 - 876" DIA. PILE
 - 882" DIA. PILE
 - 888" DIA. PILE
 - 894" DIA. PILE
 - 900" DIA. PILE
 - 906" DIA. PILE
 - 912" DIA. PILE
 - 918" DIA. PILE
 - 924" DIA. PILE
 - 930" DIA. PILE
 - 936" DIA. PILE
 - 942" DIA. PILE
 - 948" DIA. PILE
 - 954" DIA. PILE
 - 960" DIA. PILE
 - 966" DIA. PILE
 - 972" DIA. PILE
 - 978" DIA. PILE
 - 984" DIA. PILE
 - 990" DIA. PILE
 - 996" DIA. PILE
 - 1002" DIA. PILE
 - 1008" DIA. PILE
 - 1014" DIA. PILE
 - 1020" DIA. PILE
 - 1026" DIA. PILE
 - 1032" DIA. PILE
 - 1038" DIA. PILE
 - 1044" DIA. PILE
 - 1050" DIA. PILE
 - 1056" DIA. PILE
 - 1062" DIA. PILE
 - 1068" DIA. PILE
 - 1074" DIA. PILE
 - 1080" DIA. PILE
 - 1086" DIA. PILE
 - 1092" DIA. PILE
 - 1098" DIA. PILE
 - 1104" DIA. PILE
 - 1110" DIA. PILE
 - 1116" DIA. PILE
 - 1122" DIA. PILE
 - 1128" DIA. PILE
 - 1134" DIA. PILE
 - 1140" DIA. PILE
 - 1146" DIA. PILE
 - 1152" DIA. PILE
 - 1158" DIA. PILE
 - 1164" DIA. PILE
 - 1170" DIA. PILE
 - 1176" DIA. PILE
 - 1182" DIA. PILE
 - 1188" DIA. PILE
 - 1194" DIA. PILE
 - 1200" DIA. PILE

Showing a 1.281 acre tract of land out of the Francis Berry Survey A-2 in the City of Lockhart, Caldwell County, Texas and the improvements as found abated thereon. I do hereby certify to BRAN ROGERS, Plat (1) the foregoing plat is a true and correct representation of a survey made on the ground under my direct supervision on April 17, 2020. (2) I have shown or noted all recorded easements or right of ways listed in this report provided by Independence Title, Lockhart, Texas, G.E. #2012828-LKH effective date March 13, 2020, and shown all observable evidence of easements on the ground. There are no encroachments, projections, conditions nor any shortages in area for boundary other than shown hereon. THIS SURVEY IS CERTIFIED TO THE PERSON(S) / COMPANY SHOWN HEREON AND ITS CONTENTS GUARANTEED FOR USE WITH THIS ONE TRANSACTION ONLY DATED THIS DATE. THE SURVEYOR SHALL INCUR NO LIABILITY FOR ANY USE OF THIS SURVEY BEYOND THIS TRANSACTION OR FOR ANY PERSON(S) / COMPANY NOT LISTED HEREON. Only those points containing the releasor Surveyor's seal and an original signature of the Surveyor should be considered official and relied upon by the user.

S.P. BENTON-LKH
PROFESSIONAL SURVEYOR: State Register
#11 ADDRESS: 1100 State Park Road
Lockhart, Texas 78644

General Notes
1) THIS SURVEY IS FOR USE WITH THIS ONE TRANSACTION ONLY.
2) FLOOD ZONES SHOWN ARE APPROXIMATE AND CREATE NO LIABILITY ON THE PART OF THE SURVEYOR AND ARE BASED ON THE A FLOOD INSURANCE RATE MAP. The property shown lies in Flood Zone "C" according to FEMA Flood #88020225E effective date June 19, 2012. Flood Zone "C" is area determined to be suitable for the 100-year flood plain. FLOOD HAZARD BOUNDARY MAP DOES NOT IMPLY that the Property or its improvements, systems will be free from Flooding or Flood Damage. Do not excavate, Cross Thru Cut and Vias Cuts, and Flood Heights may be limited by State Made or Natural Causes.

State of Texas Caldwell County	Survey No. 21 Plat No. 1
Surveyor's Name S.P. Benton-LKH	Plat Date April 17, 2020
Plat Title Francis Berry Survey A-2	Plat Area 1.281 Acres

HINKLE SURVEYORS
P.O. Box 1027 1108 E. Main Street Lockhart, TX 78644
Ph: (832) 398-0000 Fax: (832) 398-7883 Email: contact@hinklesurveyors.com Firm Registration No: 100896-07