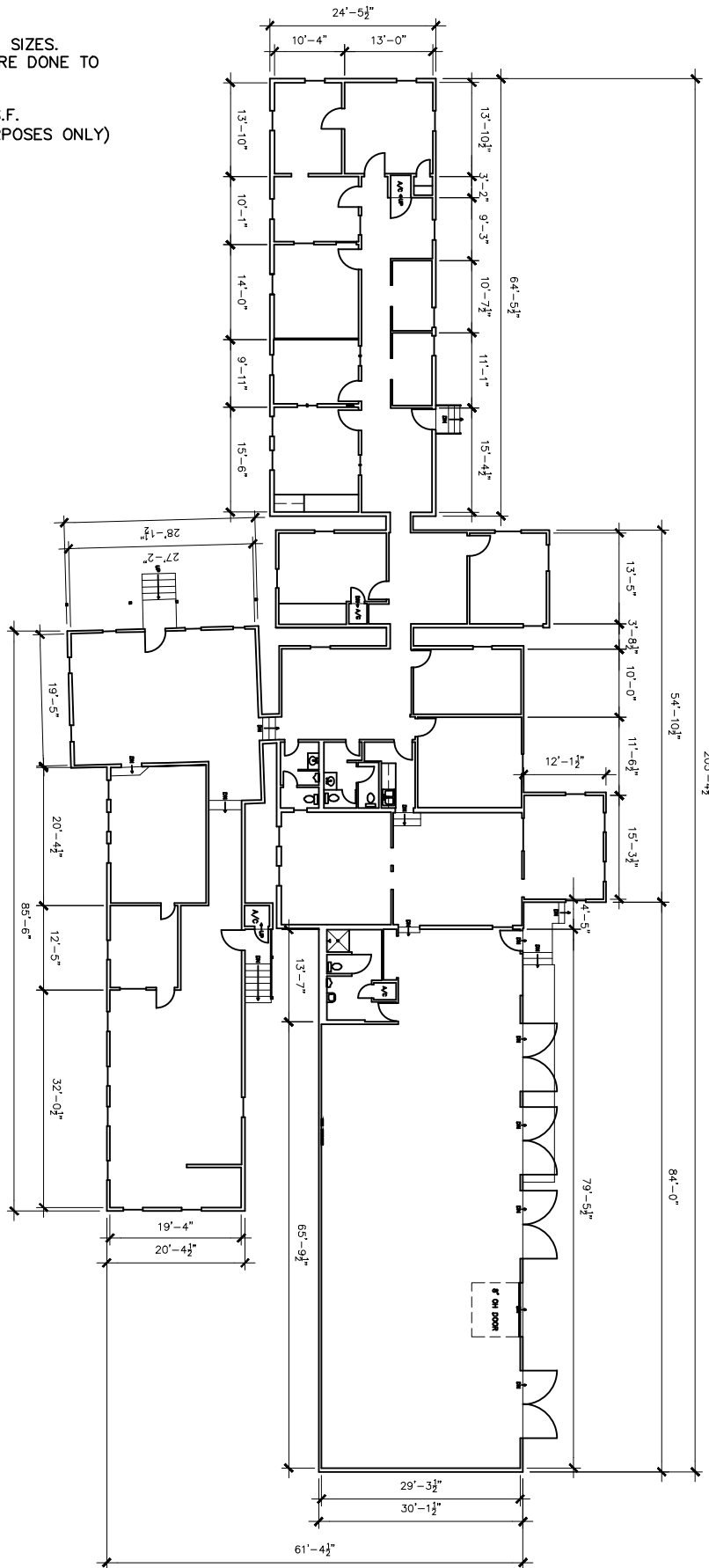


NOTES:

1. DIMENSIONS ARE TO SHOW ROOM SIZES.
 SQUARE FOOTAGE CALCULATIONS ARE DONE TO
 BOMA STANDARDS.

2. EXTERIOR GROSS AREA: 8,252 S.F.
 (FOR SINGLE TENANT AND TAX PURPOSES ONLY)

○ MAIN BUILDING
 8,252 S.F.



NOT TO SCALE

Drawing for:
 1500 WEST
 STASSNEY, LLC
 Austin, Texas

MAIN BUILDING
 1500 W. STASSNEY
 AUSTIN, TEXAS
 TOTAL RENTABLE AREA: 8,252 S.F.

THE MEASUREMENTS AND FLOOR
 PLANS ARE ACCURATE TO WITHIN 2%
 USING BOMA MEASUREMENT STANDARD
 FOR INDUSTRIAL BUILDINGS.
 ANSI/BOMA Z65.2 - 2009
 METHOD A
 Project No.: 1759.01
 Date: November 28, 2017
 ©2017

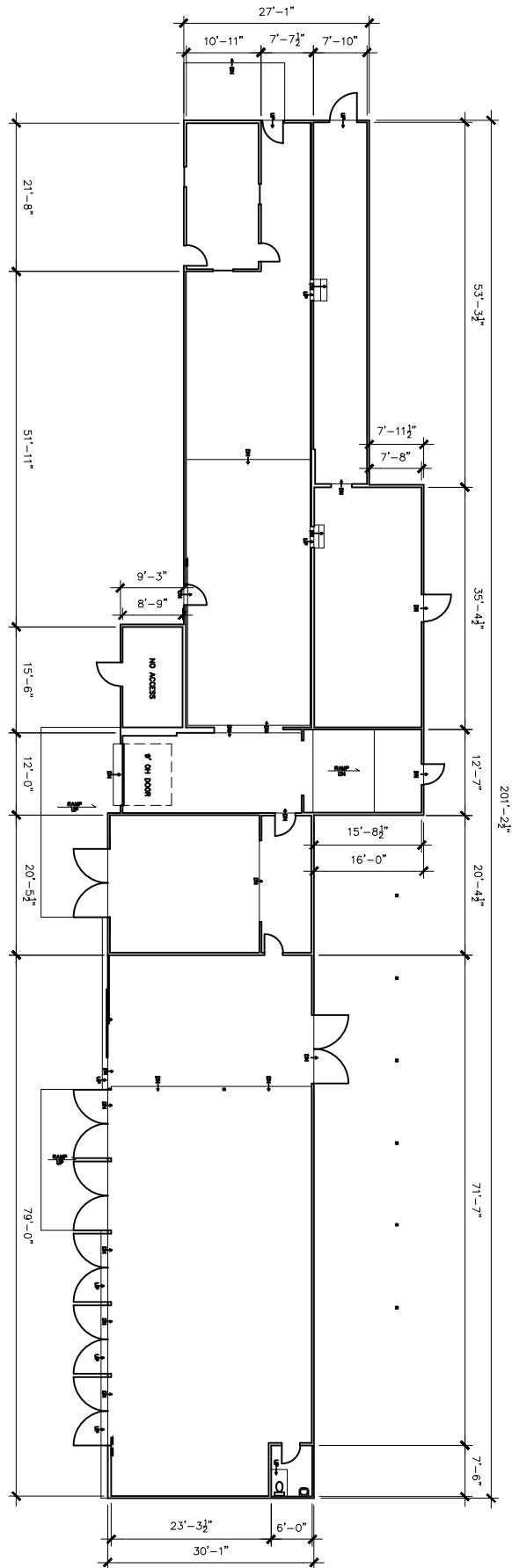
DIMENSIONS
 FLOOR PLANS
 Austin, Texas
 dimensionsfloorplans.com
 Phone: (512)342-0114

NOTES:

1. DIMENSIONS ARE TO SHOW ROOM SIZES.
 SQUARE FOOTAGE CALCULATIONS ARE DONE
 TO BOMA STANDARDS.

2. EXTERIOR GROSS AREA: 6,391 S.F.
 (FOR SINGLE TENANT AND TAX PURPOSES
 ONLY)

○
 BARN
 6,391 S.F.



NOT TO SCALE

Drawing for:
 1500 WEST
 STASSNEY, LLC
 Austin, Texas

BARN
 1500 W. STASSNEY
 AUSTIN, TEXAS
 TOTAL RENTABLE AREA: 6,391 S.F.

THE MEASUREMENTS AND FLOOR
 PLANS ARE ACCURATE TO WITHIN 2%
 USING BOMA MEASUREMENT STANDARD
 FOR INDUSTRIAL BUILDINGS.
 ANSI/BOMA Z65.2 - 2009
 METHOD A
 Project No.: 1759.01
 Date: November 28, 2017
 ©2017

† DIMENSIONS †
 FLOOR PLANS
 Austin, Texas
 dimensionsfloorplans.com
 Phone: (512)342-0114